

---

[View this email in your browser](#)



# *Inclusive Excellence*

## Spring 2025 Newsletter

### **Staying Informed on Federal Policy Changes**

New federal policies introduced in January 2025 may impact UNM, though their effects remain uncertain. University leadership is closely monitoring developments and will provide updates through a [dedicated information page](#). Rapid response teams have been formed to assess and address potential changes. Students, faculty, and staff are encouraged to stay informed and engaged as the situation evolves. Visit the information page for answers to FAQs or to submit a question of your own.

---



The Division for Equity and Inclusion and the LGBTQ Resource Center would like to address concerns regarding the shifting political landscape.

We remain committed to ensuring that all students feel welcomed, safe, and seen at UNM from admission to graduation.

Both DEI and the LGBTQ Resource Center are steadfast in our commitment to ensuring staff and faculty also feel at home at UNM.

As a university that holds firm in everyone being a Lobo, we want to remind folks of our strong UNM policies regarding Affirmed Name and Gender Identity.

Trans and Queer people are integral to the vibrant tapestry that defines the University of New Mexico and we will continue to provide space for all of us to thrive and grow.

In familial empowerment,  
The Division for Equity and Inclusion  
and  
The UNM LGBTQ Resource Center

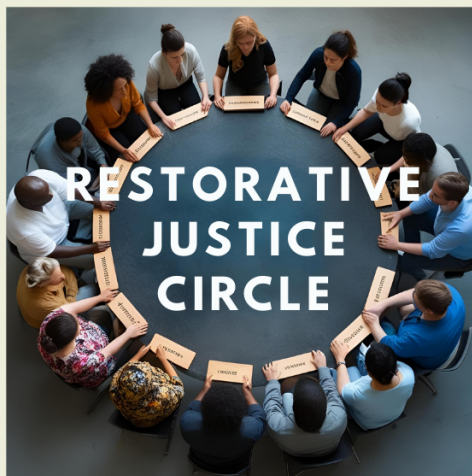
---

**Building Community,  
Fostering Belonging:  
RJ Circles Now Available!**

# RESTORATIVE JUSTICE: AN INITIAL CONVERSATION

- Restorative Justice Circles are a common practice in higher education
- They help to build community among participants, establish shared goals, and enhance a sense of belonging
- DEI hosted 20 leaders at UNM who received RJ training from Ms. Tonya Covington during summer 2024
- DEI is available to lead RJ Circles in your college or department

**CLICK HERE TO REQUEST RJ CIRCLE FACILITATION OR OTHER TRAININGS**



---

**Inclusive Excellence**



# **Postdoctoral Fellowship Deadlines for Departmental Nomination Packets**



DIVISION  
FOR EQUITY  
& INCLUSION

# 2025-2026

## INCLUSIVE EXCELLENCE POSTDOCTORAL & VISITING SCHOLARS PROGRAM

**ROUND 2 NOMINATION DEADLINE  
APRIL 10, 2025**

For more info



[diverse.unm.edu/inclusive-excellence](https://diverse.unm.edu/inclusive-excellence)



### PLEASE NOTE:

Inclusive Excellence postdoc office hours for nominating departments

(via Zoom)

*Wednesday, 19 February 2025, 2:30-3:30pm*

*Wednesday, 12 March 2025, 2:30-3:30pm*

*Please email Janet Hurula at [jhurula@unm.edu](mailto:jhurula@unm.edu) for the Zoom link to the office hours.*

---

## **Looking for Heritage Month Zoom Backgrounds?**

Step into Diversity & Inclusion: Explore Our Heritage Month Zoom Backgrounds now!  
[Click here](#) to unlock a vibrant tapestry of cultures and traditions. Download your favorites today and elevate your Zoom experience with DEI's captivating backgrounds!

---



**\$2,125.00**

## **Scholarship Deadlines**

**February 24, 2025 (for Summer 2025 session)**

*The Division for Equity and Inclusion (DEI) is offering \$2,125 scholarships to support eligible faculty members on main campus and HSC to participate in the NCFDD Faculty Success Program.*

The University of New Mexico is an institutional member of the [National Center for Faculty Development and Diversity](#) (NCFDD). NCFDD provides all UNM faculty members, post-doctoral fellows, graduate students, and staff with free access to a number of the [NCFDD's programs and resources](#) that can assist with various aspects of academic life and professional development.

### **Overview**

The NCFDD Faculty Success Program is an intensive, 12-week, online program where participants learn strategies to increase their research productivity, gain greater control of their time, and live a full and healthy life beyond campus. The program is designed to transform the personal and professional life of participants.

The program is intended for tenure-track and tenured faculty members who are looking for the perfect combination of empirically tested methods to improve research productivity through intense accountability, coaching, and peer support and to propel their work-life balance and personal growth to a completely new level.

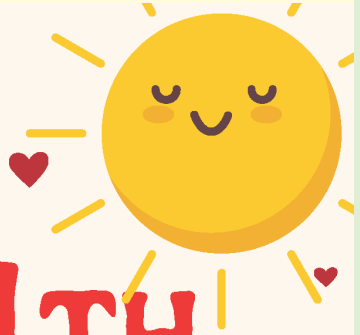
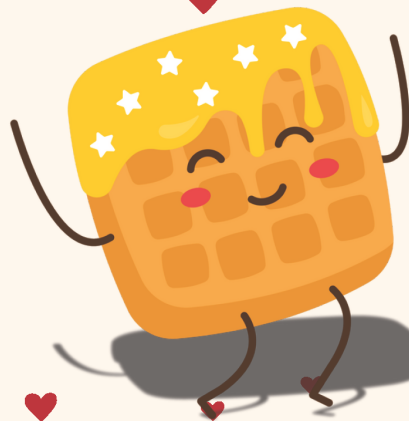
Participation in the NCFDD Faculty Success Program is open to all tenure stream faculty who are active NCFDD Individual and Institutional Members. To become an active member of NCFDD, go to <https://www.facultydiversity.org/>

**Apply Now**

# Maximize Your Potential

---

# LGBTQ Resource Center



**FEB. 14TH**

**8AM-11AM**

**RADICAL  
QUEER LOVE  
WAFFLE  
BREAKFAST**

**Will include vegan options!**

**Held at the LGBTQ Resource**

**Center**

**1919 Las Lomas NE**

# UNM LGBTQ RESOURCE CENTER



**1919 Las Lomas NE,  
Albuquerque, NM 87106**

**JAN 24th**

**Frito Pie Friday**

**12-3 PM**

**@ LGBTQ Resource  
Center**

**FEB 12th**

**Kindness  
Carnival**

**11-1 PM**

**@UNM SUB**

**FEB 14th**

**Radical Queer  
Love Waffle  
Breakfast**

**8-11 AM**

**@ LGBTQ Resource  
Center**

**MAR 7th**

**LGBTQ Closet  
Opens**

**11-2PM**

**@ LGBTQ Resource  
Center**

**MAR 12th**

**Legal Name  
Change Clinic**

**11-1 PM**

**@ LGBTQ Resource  
Center**

**APR 18th**

**QT Craft Fair**

**STAY TUNED FOR  
MORE INFO!**

**MAY 2nd**

**Pride  
Convocation**

**5-7 PM**

**@Honors Forum**

**VISIT US ONLINE!**  
[linktr.ee/unmlgbtqrc](https://linktr.ee/unmlgbtqrc)



**@UNM\_LGBTQRC**

# Biweekly + Weekly Spring Recurring Events

**MONDAYS**

**5PM-7PM  
WEEKLY**

BEGINS JAN. 27

@ JOHNSON GYM

**QUEER GYM  
NIGHT**

**WEDNESDAYS**

**4:30PM-6PM  
WEEKLY**

BEGINS JAN. 29

@ LGBTQ  
RESOURCE CENTER

**TRANS + QUEER  
SUPPORT  
GROUP**

**WEDNESDAYS**

**7PM-9PM  
WEEKLY**

BEGINS JAN 29

@ LGBTQ  
RESOURCE CENTER

**JUNIPER  
REIMAGINED**

**THURSDAYS**

**11AM-1PM  
BI-WEEKLY  
BEGINS FEB 06**

@ LGBTQ  
RESOURCE CENTER

**LOBO  
GAYMERS**

VISIT US ONLINE!

[linktr.ee/unmlgbtqrc](https://linktr.ee/unmlgbtqrc)



**THURSDAYS**

**4:30PM-6PM  
WEEKLY**

BEGINS FEB 06

@ LGBTQ RESOURCE  
CENTER

**TRANS  
SOMATICS**

@unm\_lgbtqrc





## Spring 25 Open Safe Zone Workshops

Join the LGBTQ Resource Center for a workshop to learn more about the LGBTQIA community. This workshop will cover terminology, statistics, and ways to support the Trans and Queer community at UNM



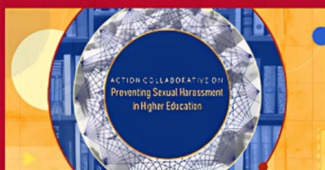
**Virtual:** February 28th  
9am-12pm via Zoom  
Scan QR Code to Sign Up

**In Person:** March 7th  
1pm-4pm Stamm Room  
Scan QR Code to Sign Up



For more information, please contact the  
LGBTQ Resource Center  
Phone: 505.277.LGBT (5428)  
Email: [lgbtqrc@unm.edu](mailto:lgbtqrc@unm.edu)





Upstander Workshops



DIVISION  
FOR EQUITY  
& INCLUSION

505.277.1238  
DIVERSE.UNM.EDU



LGBTQ Resource  
Center  
505.277.5428  
lgbtqrc@unm.edu



Copyright (C) 2025 UNM Division for Equity and Inclusion. All rights reserved.

Our mailing address is:

UNM Division for Equity and Inclusion  
Scholes Hall Suite 203  
1 University of New Mexico  
MSC05 3405  
Albuquerque, NM 87131

Want to change how you receive these emails?  
You can [update your preferences](#) or [unsubscribe](#)

